



1410/92-100 Quay Street BRISBANE CITY QLD

2 2 1

It is delighted to offer this superb 2 bedrooms, 2 bathroom apartment that fuses together living, dining and outdoor entertaining to create a seamless flow of space for optimum inner city living.

***BRAND NEW HYBRID FLOORING THROUGH OUT!**

This spacious floor plan features large main bedroom combined with unique ensuite and lavish tub, well equipped kitchen with dishwasher, open plan living and large entertaining balcony that effortlessly presents beautiful views of the Brisbane River with gorgeous elevated breeze.

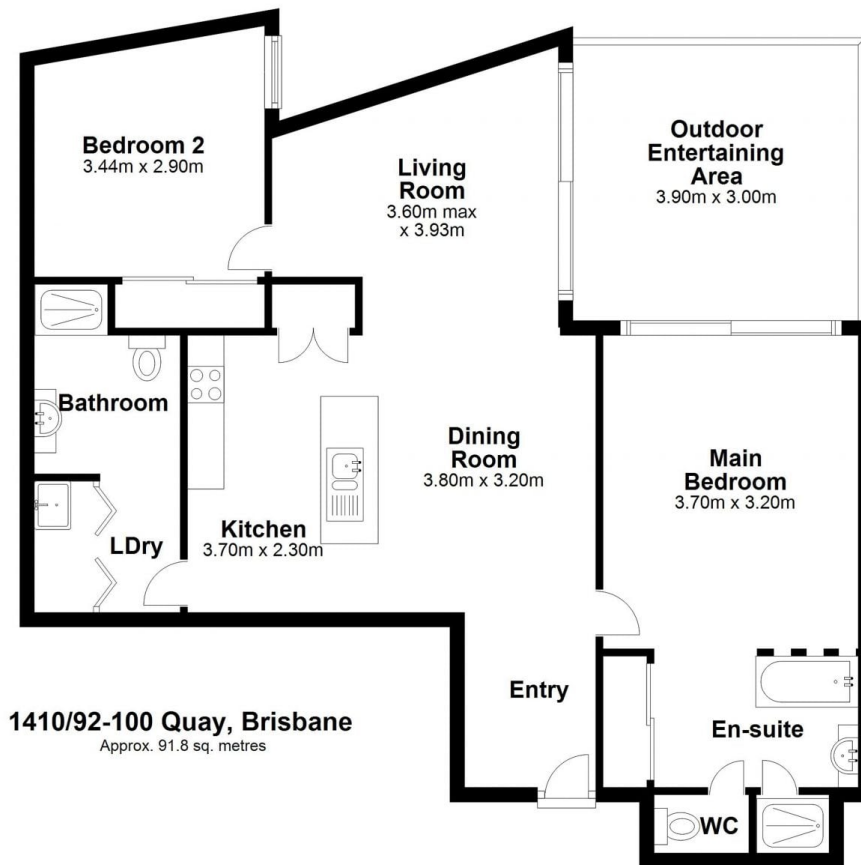
Enjoy the benefits of resort style living in the well

[For full version visit the website](https://www.kloverproperty.com.au)

Type : Apartment
Building Size : 92.90304 sqm
View : <https://www.kloverproperty.com.au/lease/qld/city-north/brisbane-city/residential/apartment/8618976>



Chris Shin
(07) 3416 5803



Total area: approx. 91.8 sq. metres

Whilst every attempt has been made to ensure accuracy of this floor plan, the measurements are approximate only and no responsibility is taken for measurement error.
Plan produced using PlanUp.