



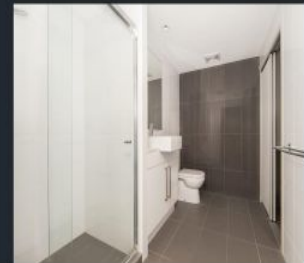
K
KLOVER



K
KLOVER






K
KLOVER



K
KLOVER

503/148 Victoria Park Road Kelvin Grove QLD

2  2  1 

This well appointed and spacious apartment is situated in the vibrant Kelvin Grove Urban Village. It is just a short stroll to Queensland University of Technology (right next to the K block), school, cafes, restaurants and public transport (QUT Kelvin Grove Station). It is only 2 minutes drive to the Victoria Park Golf Course and Royal Brisbane and Women's Hospital and only 5 minutes drive to Brisbane CBD.

Type : Unit

View : <https://www.kloverproperty.com.au/lease/qld/city-north/kelvin-grove/residential/unit/8619009>

Apartment features:

- Two generous size bedrooms with aircon, master bedroom with ensuite
- Air conditioning to both bedrooms and living area
- Designer kitchen, stainless steel appliances and

[For full version visit the website](https://www.kloverproperty.com.au)