

## 10 Palmerston St Ripley QLD

4  2  2 

Welcome to your new home at 10 Palmerston Street, Ripley, QLD! This inviting and spacious family residence is now available for rent, offering a perfect blend of comfort, convenience, and style.

### Key Features:

#### - Location, Location, Location:

Situated in the thriving suburb of Ripley, you'll enjoy easy access to local schools, parks, shopping centers, and public transport, making it an ideal choice for families and professionals alike.

#### - Spacious Interior:

[For full version visit the website](https://www.kloverproperty.com.au)

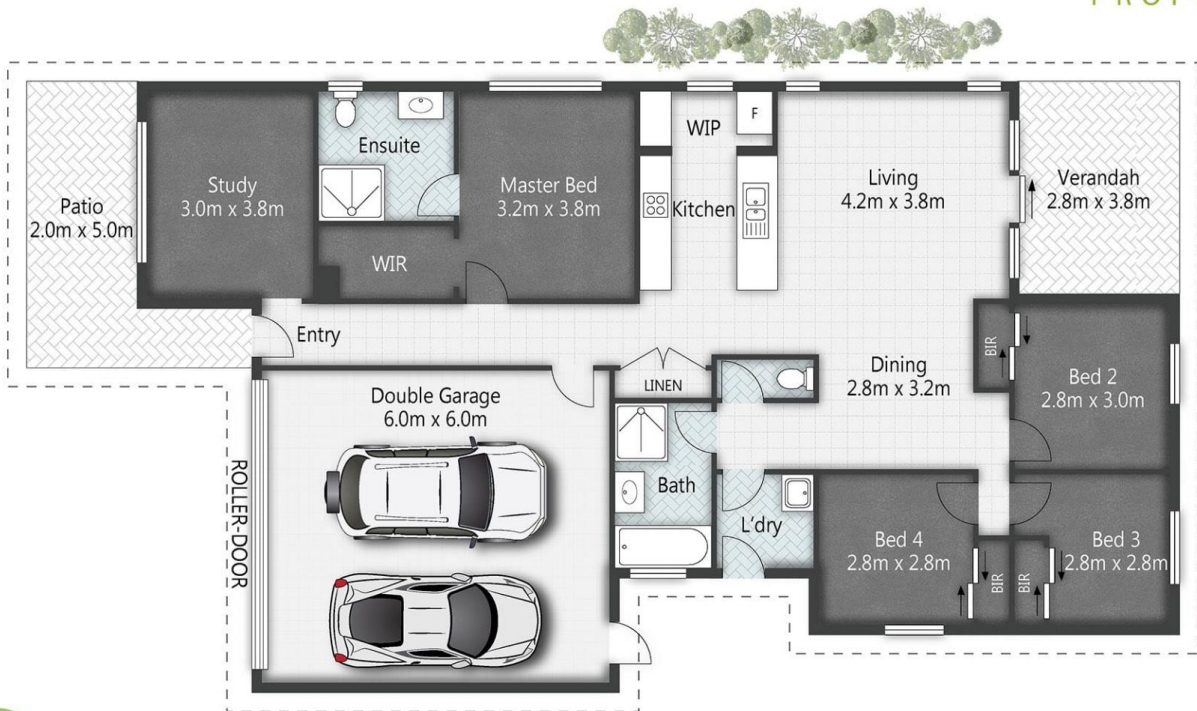
**Type** : House  
**Building Size** : 176 sqm  
**Land Size** : 511 sqm  
**View** : <https://www.kloverproperty.com.au/lease/qld/ipswich-west-moreton/ripley/residential/house/8619174>



**Daisy Yang**  
0484 658 182



4 | 2 | 2 | 176m<sup>2</sup>



Plans are shown for marketing purposes only. All dimensions are approximate; they are subject to errors and inaccuracies and no liability will be accepted.

