

28 Opal Lane Pimpama QLD

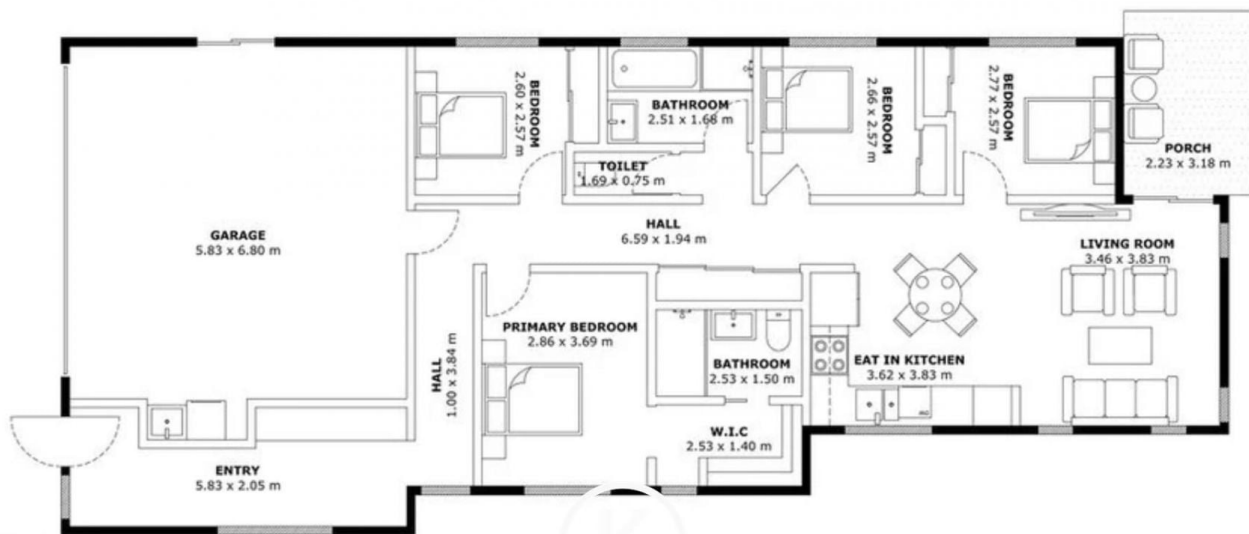
4  2  2 

Welcome to your dream rental destination nestled in the heart of Pimpama! This stunning property offers a perfect blend of elegance, comfort, and convenience.

Type : House
View : <https://www.kloverproperty.com.au/lease/qld/gold-coast/pimpama/residential/house/8619243>



Heather Lee
0472 504 548



-  THICK WALL
-  DOOR
-  PORCH
-  WINDOW



28 Opal Lane
Pimpama, QLD, Australia

FLOOR 1

GRAND INTERNAL AREA
 FLOOR 1: 111.1m²
 EXC. IDEAL SALES CODE: 7, 2, P, ICH: 7a

Compass is a licensed real estate broker and abides by Equal Housing Opportunity laws. All material presented herein is for informational purposes only and is not intended to be relied upon as an offer of any financial product. All information is derived from sources deemed reliable but is subject to errors, omissions, changes in price, condition, sale, or withdrawal without notice. No statement is made as to accuracy of any description. All measurements and square footages are approximate. Exact dimensions can be obtained by retaining the services of an architect or engineer. This is not intended to solicit property already listed.