

330 Newnham Rd UPPER MOUNT GRAVATT QLD

3  1  4 

THIS BEAUTIFUL FAMILY HOME IN THE WISHART AND MANSFIELD SCHOOL CATCHMENTS MUST BE SOLD! LOCATED 3 MINS DRIVING TO WESTFIELD GARDEN CITY AND MANSFIELD STATE HIGH SCHOOL. WISHART STATE SCHOOL? ONLY 500M, 1 MIN DRIVING OR 5 MINS WALKING.

Type : House
Building Size : 176.515776 sqm
Land Size : 607 sqm
View : <https://www.kloverproperty.com.au/sale/qld/southside/upper-mount-gravatt/residential/house/8619451>

As soon as you walk in to the house it catches your eye with the stunning timber flooring throughout. Creating a warm and relax feel, the layout on offer is amazing.

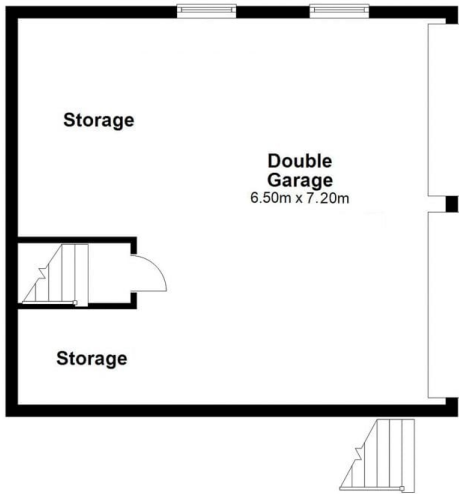
The interior boasts a large living room, complemented by polished floorboards and natural light.

[For full version visit the website](https://www.kloverproperty.com.au)

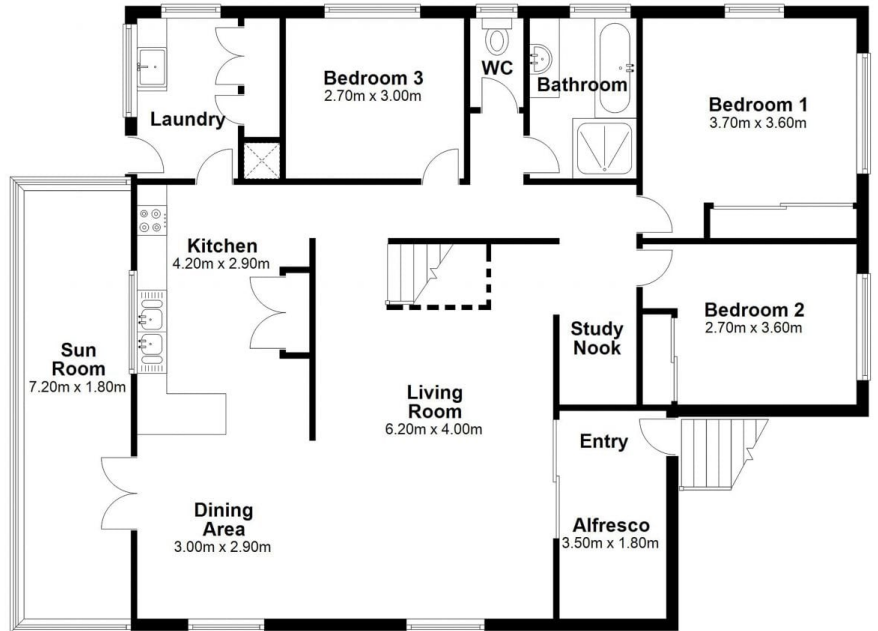


Kay Lee
(07) 3416 5803

Lower Level
Approx. 47.6 sq. metres



Upper Level
Approx. 124.1 sq. metres



Total area: approx. 171.7 sq. metres

Whilst every attempt has been made to ensure accuracy of this floor plan, the measurements are approximate only and no responsibility is taken for measurement error.
Plan produced using PlanUp.