



37 Mount Huntley Street Park Ridge QLD

4  2  2 

Positioned in a quiet street surrounded by owner occupied family homes, this will be a perfect home for families looking for a new build, but wanting to move in right away.

If you are an investor, this would be a golden opportunity as this place can be tenanted from the day one (the current owner can rent it until their new home is built completely)

The proximity to all local amenities and infrastructures such as schools, shoppings, public transports and highways, provides convenience to your lifestyle.

Features:
- 2590m high ceiling

[For full version visit the website](https://www.kloverproperty.com.au)

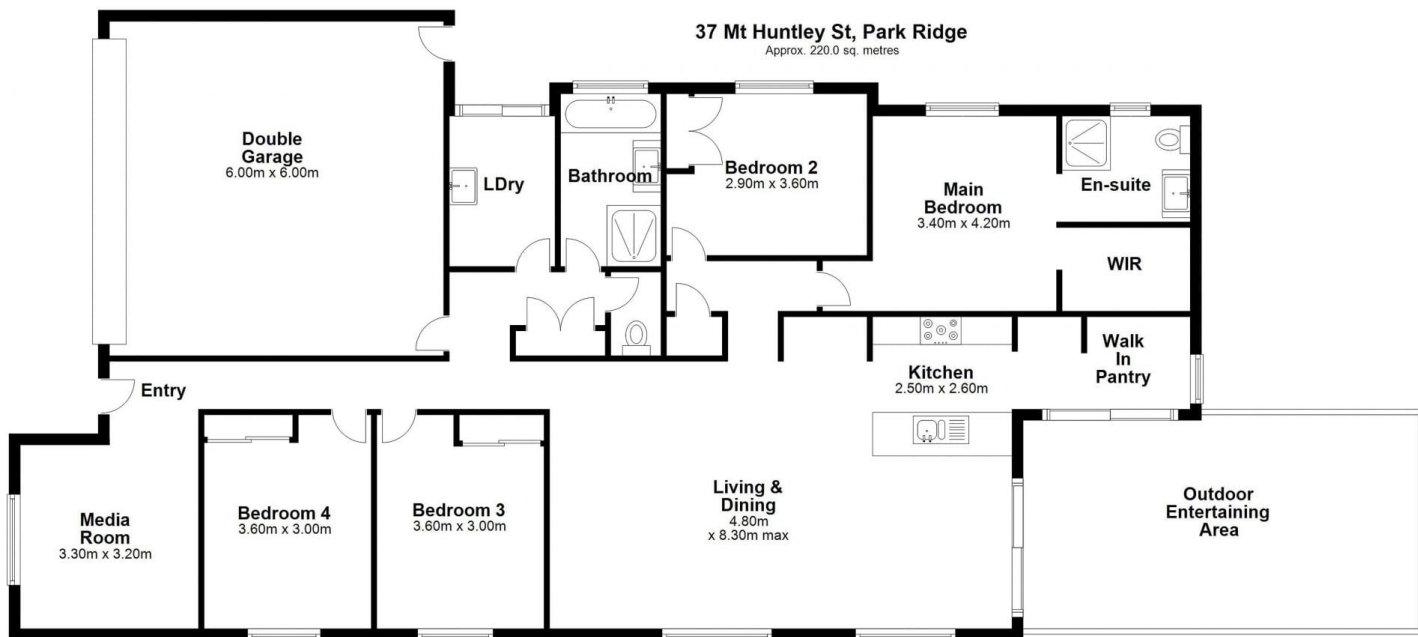
Type : House
Price : \$ 580,000
Building Size : 220 sqm
Land Size : 423 sqm
View : <https://www.kloverproperty.com.au/sale/qld/logan/park-ridge/residential/house/8619460>



Kay Lee

37 Mt Huntley St, Park Ridge

Approx. 220.0 sq. metres



Total area: approx. 220.0 sq. metres

Whilst every attempt has been made to ensure accuracy of this floor plan, the measurements are approximate only and no responsibility is taken for measurement error.
Plan produced using PlanUp.