

3600M2



164 Loganlea Road Loganlea QLD

8  5  12 

This almost new property has great rental yield, with potential rent of \$1510/week. It is not your ordinary property, but a house which has 8 bedrooms and 5 bathrooms. It can easily be partitioned for self contained flats. The house is situated on a level 1,100m² block. The large backyard (approximately 1551m²) is great for those who loves gardening or planting fruit trees. It is only 2 minutes drive to Loganlea train station, Logan Hospital and the Griffith University. You will need to inspect to appreciate this great investment opportunity.

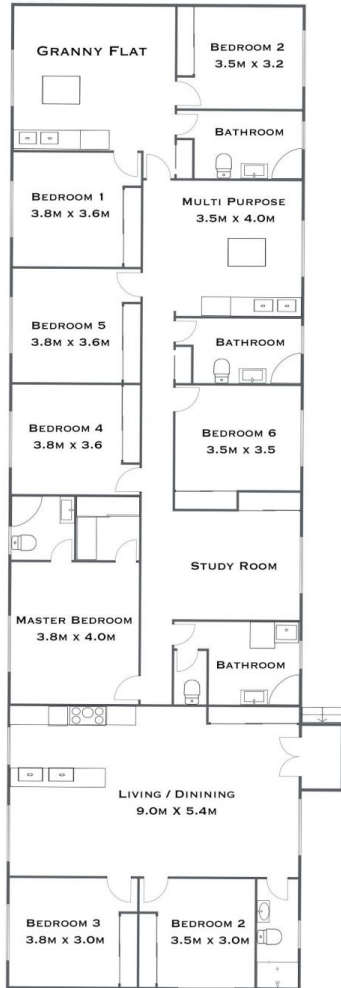
Just 26km South-East of the Brisbane CBD, Loganlea suburb has excellent access to Pacific and Logan motorways allowing for an easy connection to all of South-East Queensland, including Brisbane, Ipswich and

Type : House
Price : \$ 880,000
Land Size : 3641 sqm
View : <https://www.kloverproperty.com.au/sale/qld/logan/loganlea/residential/house/8619469>



Kay Lee
(07) 3416 5803

[For full version visit the website](https://www.kloverproperty.com.au)



KLOVER
PROPERTY



8



5



10+

164 LOGANLEA RD, LOGANLEA, QLD

APPROX INTERNAL FLOOR AREA 311M²

*THIS FIGURE INDICATES APPROXIMATE USABLESPACE
AND MAY NOT INCLUDED AREA OF WALLS AND THEREFORE, MAY DIFFER
FROM BUILDING OR COUNCIL PLANS

**EXCLUDES GARDEN, GLASS AND VEGETATION

WHILE EVERY ATTEMPT IS MADE TO ENSURE ACCURACY PLEASE NOTE THAT THESE PLANS ARE ONLY DESIGNED TO GIVEN APPROXIMATE INDICATION OF LAYOUT. ALL DIMENSIONS, SCALES, ANGLES, LOCATION OR ORIENTATION OF DOORS, WALLS, WINDOWS OR ANY OTHER ITEMS IS APPROXIMATE. THESE PLANS ARE FOR REPRESENTATION PURPOSE ONLY AND SHOULD NOT BE RELIED UPON FOR ANY PURPOSE. NO RESPONSIBILITY IS TAKEN FOR ANY ERROR OR MIS STATEMENT WITHIN THIS PLAN.