






24/35 Clarence Street Calamvale QLD

3  2  2 

You will be astounded with the spaciousness of this 3 bedroom home, one of the largest townhouse in Calamvale or the surrounding suburbs. its master bedroom is super size, measuring 22m2. Once you have seen it, you will be disappointed by other units on the market. It is just a short walk to the Calamvale Community College and the popular Calamvale District Park.

Type : Townhouse

Price : \$ 630,000

View : <https://www.kloverproperty.com.au/sale/qld/brisbane-region/calamvale/residential/townhouse/8619489>

Upstairs:-

3 spacious bedrooms with built-in robe

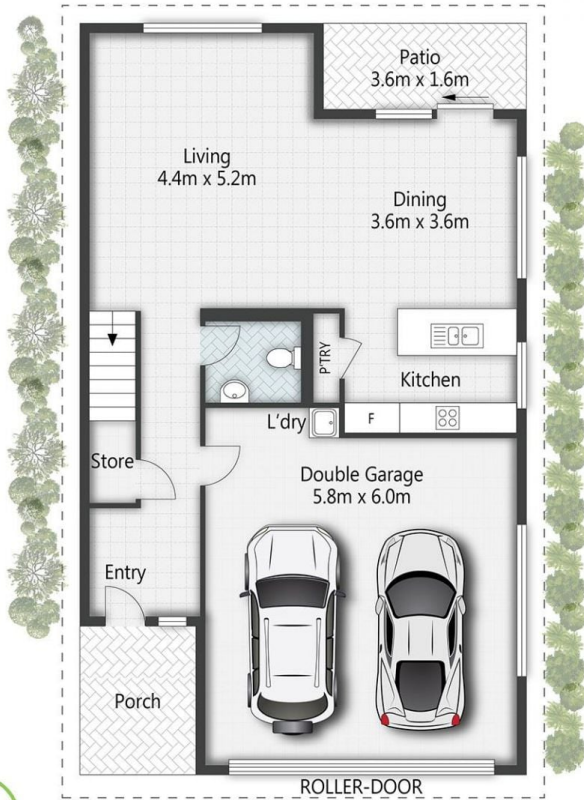
Master bedroom equipped with aircon, twice the size of most master bedrooms. Approximately 22 m2 (not including the ensuite that comes with his & hers vanity)

[For full version visit the website](https://www.kloverproperty.com.au)

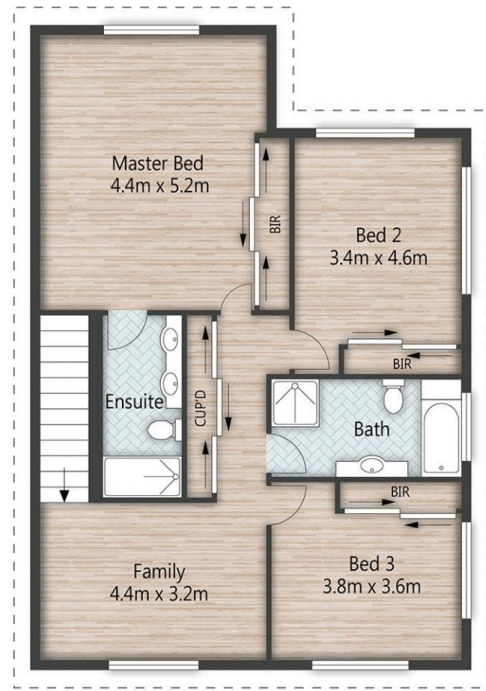


Kay Lee
(07) 3416 5803

3 | 2 | 2 | 210m²



GROUND FLOOR



FIRST FLOOR



Plans are shown for marketing purposes only. All dimensions are approximate; they are subject to errors and inaccuracies and no liability will be accepted.