




356 Waller Rd Park Ridge QLD

4  2  2 

Welcome to "Owner Occupied" since day 1, 356 Waller Road, Park Ridge - a contemporary home that blends modern comfort, multiple living zones, and energy-efficient features on a low-maintenance 400m² block.

Perfect for families or investors, this property offers four bedrooms, two bathrooms, and a thoughtful floor plan with seamless flow between indoor and outdoor living spaces.

Key Features

- ? 4 Bedrooms | 2 Bathrooms | 2-Car Garage
- ? Master suite with walk-in robe & private ensuite
- ? Three additional bedrooms with built-in wardrobes

[For full version visit the website](https://www.kloverproperty.com.au)

Type : House
Price : \$ 950,000
Building Size : 240 sqm
Land Size : 400 sqm
View : <https://www.kloverproperty.com.au/sale/qld/logan/park-ridge/residential/house/8619556>



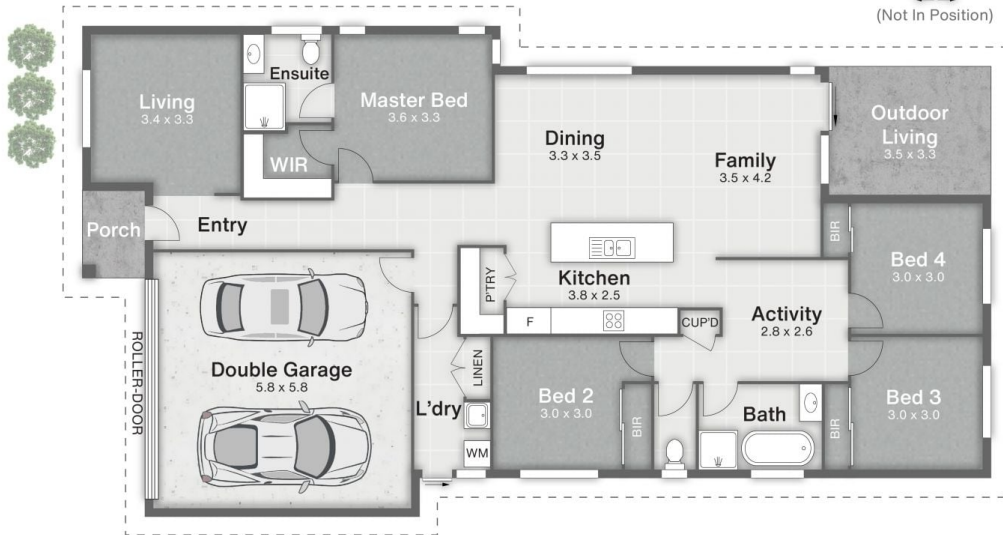
Kay Lee



Chris Shin

Shed
 2.4 x 1.2

(Not In Position)



356 WALLER ROAD
 PARK RIDGE

240m²

400m²

4
 2
 2



Disclaimer

This is not a legal document; all measurements and dimensions are approximate and are subject to errors, omission or misstatement. No liability will be accepted. Plans are shown for marketing purposes only.