






**50 Seagrass St DECEPTION BAY QLD**

4  2  2 

Perfectly positioned on a premium 391m<sup>2</sup> corner block, this near-new 2023-built double-storey home delivers contemporary design, exceptional natural light, and a practical floorplan that suits families, investors, and owner-occupiers seeking a move-in-ready home in a high-growth location.

Currently leased for \$755/week until 8 December, with an achievable rental return of \$800/week, this property offers both cashflow and future flexibility.

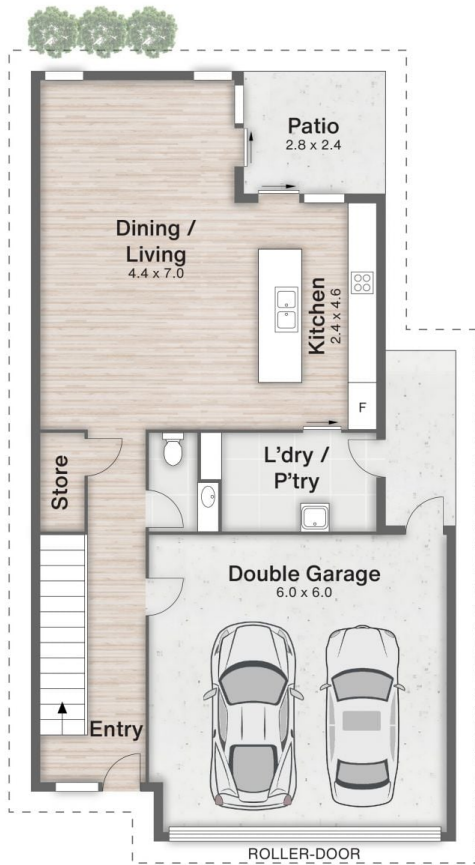
**Type** : House  
**Price** : Offers over \$950k  
**Building Size** : 391 sqm  
**Land Size** : 391 sqm  
**View** : <https://www.kloverproperty.com.au/sale/qld/redcliffe-bribie-caboolture/deception-bay/residential/house/8619564>



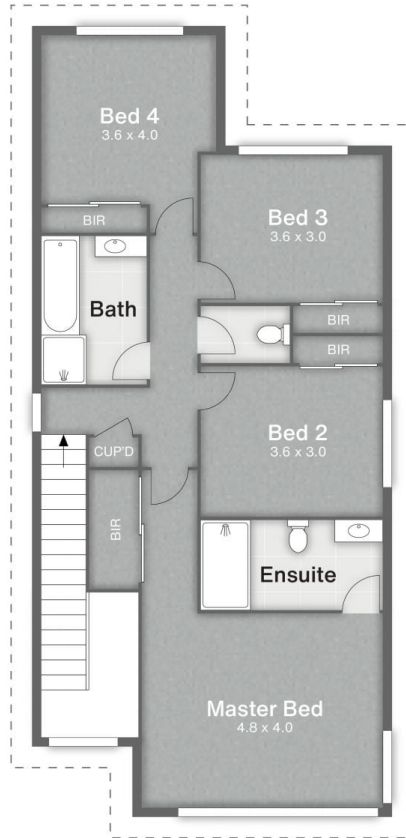
**Kay Lee**



**Chris Shin**



**GROUND FLOOR**



**FIRST FLOOR**



**50 SEAGRASS STREET**  
DECEPTION BAY

228m<sup>2</sup>

391m<sup>2</sup>

4   
 2   
 2

**Disclaimer**  
This is not a legal document; all measurements and dimensions are approximate and are subject to errors, omission or misstatement. No liability will be accepted. Plans are shown for marketing purposes only.