



5401/88 The Esplanade Surfers Paradise QLD

2  2  1 

Welcome to Residence 5401 in the iconic Ocean by Meriton? a breathtaking two-bedroom, two-bathroom sky home capturing sweeping coastline panoramas from Surfers Paradise down to Broadbeach, paired with world-class facilities and elegant interiors. Positioned directly opposite the beach, this is luxury coastal living in its purest form.

Type : Apartment
Price : \$1,350,000
Building Size : 114 sqm
View : <https://www.kloverproperty.com.au/sale/qld/gold-coast/surfers-paradise/residential/apartment/8619565>



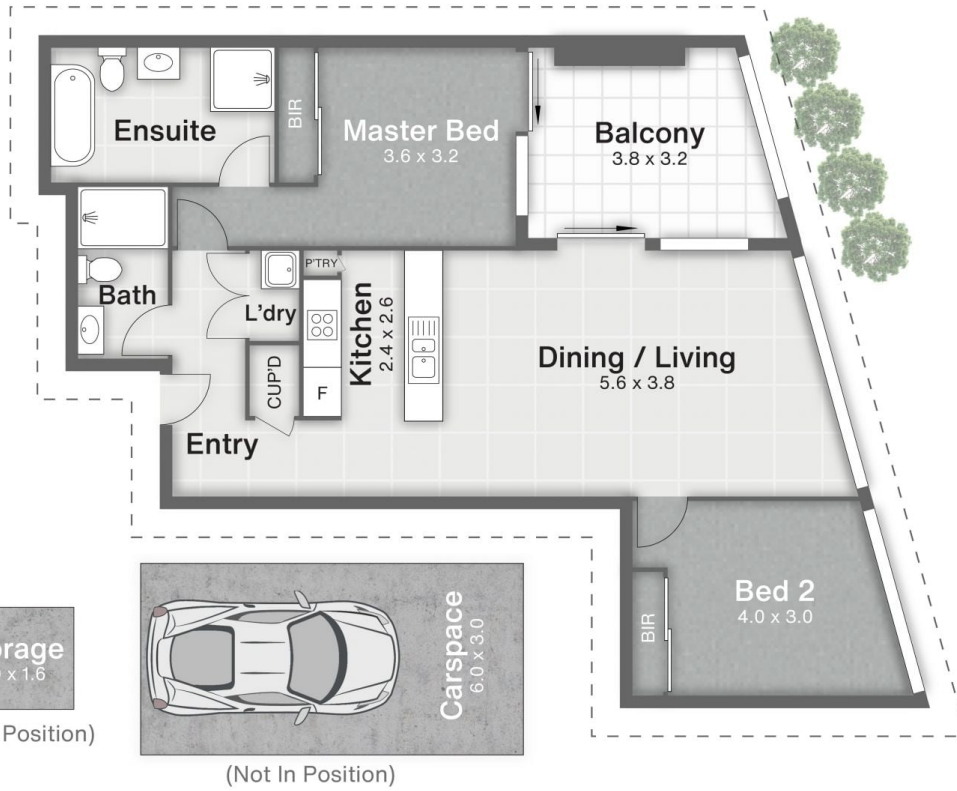
Kay Lee
(07) 3416 5803



Chris Shin
(07) 3416 5803

88 THE ESPLANADE
 SURFERS PARADISE

Internal: 86m²
 Balcony: 10m²
 Carspace: 18m²
 Total: 114m²



Disclaimer

This is not a legal document; all measurements and dimensions are approximate and are subject to errors, omission or misstatement. No liability will be accepted. Plans are shown for marketing purposes only.