






**4 Savanna Gardens Pimpama QLD**

3  2  2 

Set in a quiet and family-friendly pocket, 4 Savanna Gardens, Pimpama is a well-presented freestanding home that has been owner-occupied, offering a noticeably higher level of care and maintenance compared to typical investment properties.

This modern two-level home features a practical layout, generous living spaces, and a low-maintenance outdoor area ? ideal for families, first-home buyers, or investors seeking a quality property in a high-demand suburb.

**Type** : House  
**Price** : Offers Over \$850,000  
**Land Size** : 205 sqm  
**View** : <https://www.kloverproperty.com.au/sale/qld/gold-coast/pimpama/residential/house/8619567>



**Kay Lee**  
(07) 3416 5803

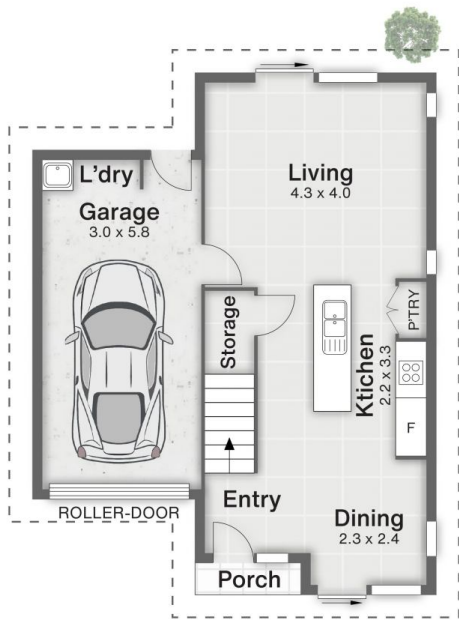


**Chris Shin**  
(07) 3416 5803

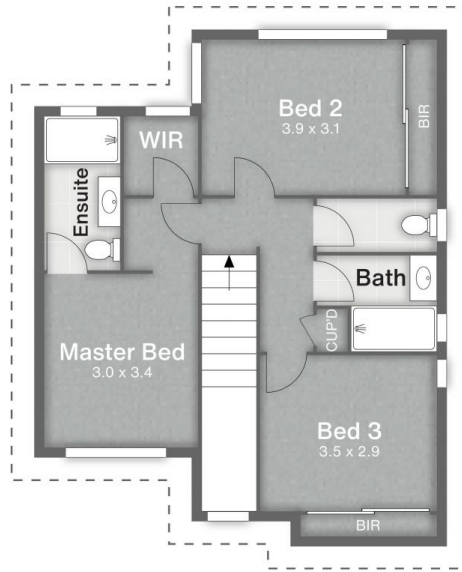
**4 SAVANNA GARDENS**  
 PIMPAMA

🏠 125m<sup>2</sup>

📏 205m<sup>2</sup>



**GROUND FLOOR**



**FIRST FLOOR**



**Disclaimer**

This is not a legal document; all measurements and dimensions are approximate and are subject to errors, omission or misstatement. No liability will be accepted. Plans are shown for marketing purposes only.