



10 Tora Street Rochedale South QLD

3  2  2 

Perfectly positioned in a quiet, family-friendly street, this spacious home offers comfort, flexibility, and plenty of room for the whole family.

Set on a generous 607sqm block, this well-maintained property features a versatile dual-level layout, ideal for families needing extra space or working from home.

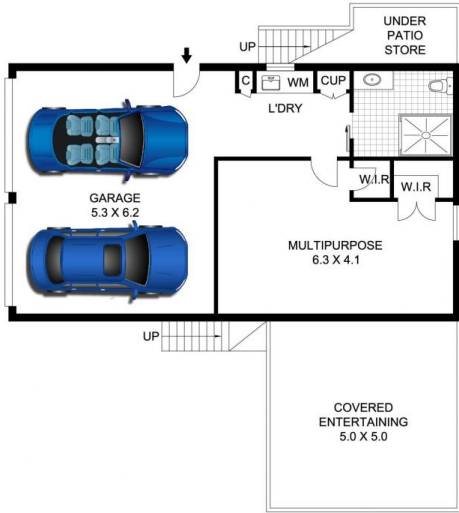
Upstairs, you'll find a light-filled open-plan living, dining and kitchen area, flowing seamlessly onto a large entertainer's deck - perfect for relaxing or hosting guests

Type : House

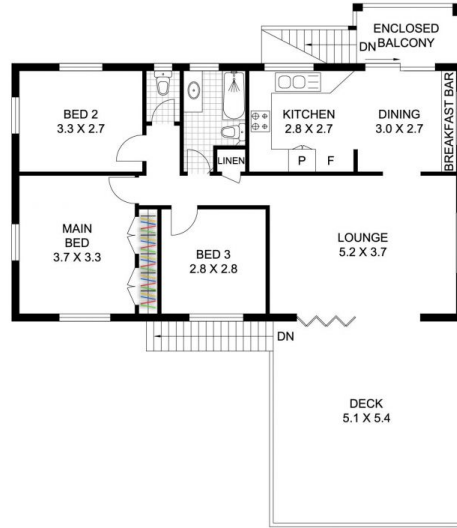
View : <https://www.kloverproperty.com.au/lease/qld/logan/rochedale-south/residential/house/8677364>



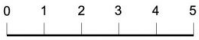
Won Jang
0458 560 486



GROUND LEVEL



UPPER LEVEL



Scale in metres. Indicative only. Dimensions are approximate. All information contained herein is gathered from sources we believe to be reliable. However, we cannot guarantee its accuracy and interested parties should rely on their own enquiries. www.skylinemedia.com.au

Residence	- 117.0	m ²
Ext.	- 69.9	m ²
Garage	- 34.5	m ²
Total	221.4	m²



10 Tora Street, Rochedale South