





22 Paul Crescent Nirimba QLD

3  2  2 

22 Paul Crescent, Nirimba

Positioned in a quiet, family-friendly pocket of Nirimba, this beautifully presented low-set home offers a perfect blend of modern style, quality finishes and practical everyday living.

Designed with comfort and functionality in mind, the home features wide hallways and high ceilings that enhance the sense of space and natural light throughout. The well-considered floor plan centres around an open-plan kitchen, living and dining area, creating a welcoming hub for both relaxing and entertaining.

The modern kitchen is thoughtfully appointed with stone

[For full version visit the website](https://www.kloverproperty.com.au/sale/22-paul-crescent-nirimba-queensland)

Type : House
Price : FOR SALE
Building Size : 144 sqm
Land Size : 280 sqm
View : <https://www.kloverproperty.com.au/sale/22-paul-crescent-nirimba-queensland>



Kay Lee



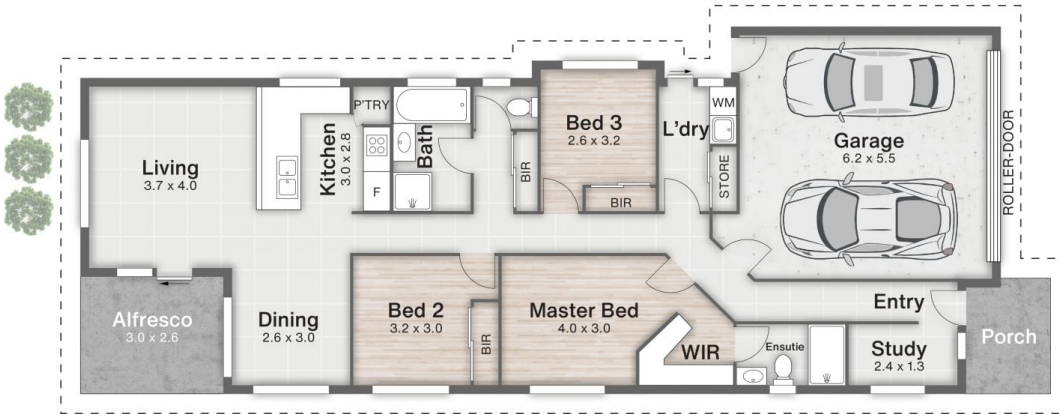
Chris Shin

22 PAUL CRESCENT
 NIRIMBA

 144m²

 280m²

 3
 2
 2



↓
 NORTH

Disclaimer

This is not a legal document; all measurements and dimensions are approximate and are subject to errors, omission or misstatement. No liability will be accepted. Plans are shown for marketing purposes only.