



2/408 Chatswood Road Shailer Park QLD

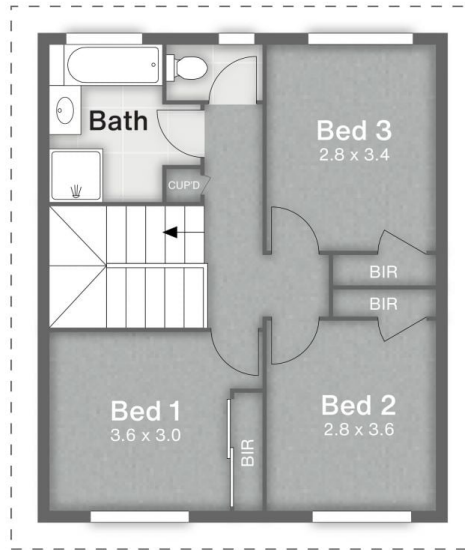
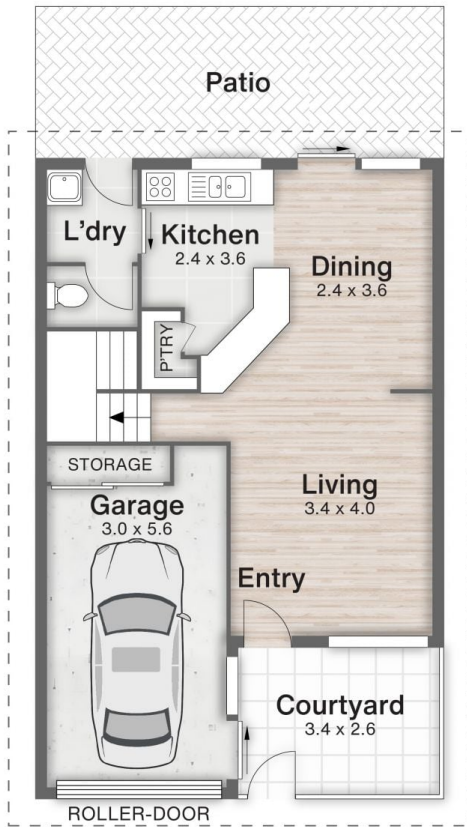
3  1  1 

Nestled in a quiet, boutique complex of just 7 units, this hilltop townhouse is the ultimate blend of peaceful nature and urban accessibility. Backing onto Koolan Park, it delivers a private leafy retreat with remarkably low body corporate fees of just \$2,050 per annum. Whether you are looking to enter the market, downsize to low-maintenance living, or add a high-yield asset to your portfolio, this townhouse delivers exceptional value. Available for immediate possession, you can move straight in or tenant the property without delay.

- Freshly painted interiors, new carpet flows throughout the entire upstairs level and all bedrooms.
- Expected rental return of \$600 per week, offering

[For full version visit the website](#)

Type : House
Price : Offers over \$599,000 considered
Building Size : 110 sqm
Land Size : 110 sqm
View : <https://www.kloverproperty.com.au/sale/qld/logan/shailer-park/residential/house/8701482>



UNIT 2/408 CHATSWOOD ROAD
SHAILER PARK

132m²

113m²

3
 1
 1

Disclaimer

This is not a legal document; all measurements and dimensions are approximate and are subject to errors, omission or misstatement. No liability will be accepted. Plans are shown for marketing purposes only.